



Royal Scarpfout Yachtclub Blankenberge vzw



Op alle RSYB steigers
Sur tous les pontons RSYB
On all RSYB pontoons



North Sea Boating

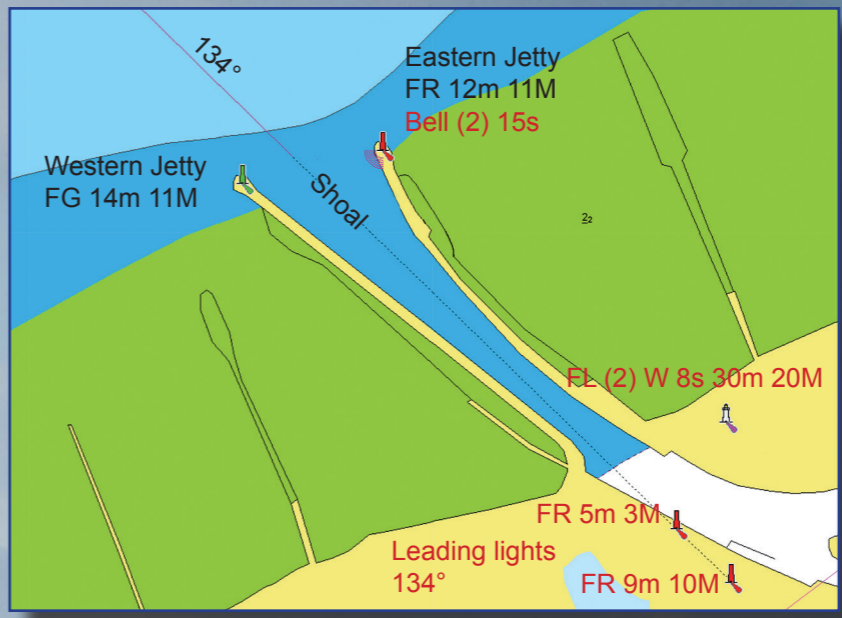


Wittevrongel Sails



LEGENDA

- A** Aanmeldingssteiger
Ponton d'attente
Visitor moorings
- B** Clubhuis
Clubhouse
- C** Havenkantoor
Capitainerie
Harbour Master's Office
- D** Toeganspoort RSYB steigers
Porte d'accès pontons RSYB
Entrance gate pontoons RSYB



Welcome

To enter the harbour, follow the leading lights at 134°. The pontoon numbers in the new harbour are 13,14 and 15 and numbers 18, 19, 20, 21 and 22 in the old harbour. At arrival you can moor at the visitors pontoon (pontoon 18). The Harbour Master shall then assign you a berth. Use of electricity (16 Amp), potable water and wifi is included in the price. The sanitary block is located in the building of the harbour Master's office. Waste containers are located nearby the Harbour Master's office.

Clubhouse

Meals, snacks and drinks, hot and cold, served at reasonable prices.

Fuel

Pontoon on starboard shore, after entering the port.

Tidal information, draught, weather forecast

For information, please contact the Harbour Master, or have a look at the info screen in the Harbour Master's office.

Public transport

Tram: in summer every 10 minutes, directions Knokke and De Panne.

Train: every hour, direction Bruges, Ghent and Brussels.



+32 (0)50 41 14 20



+32 (0)476 97 16 92



info@scarphout.be



www.scarphout.be

Western Jetty

51° 18 906 N - 03° 06 409 E
FG 14m 11M

Eastern Jetty

51° 18 930 N - 03° 06 550 E
FR 12m 11M - Bell (2) 15s

Lighthouse

51° 18 760 N - 03° 06 870 E
FL (2) W 8s 30m 20M

Leading lights 134°

Front 51° 18 700 N - 03° 06 830 E - FR 5m 3M

Rear 51° 18 700 N - 03° 06 880 E - FR 9m 10M